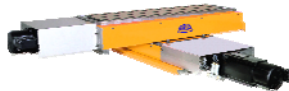
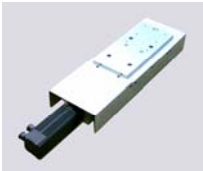




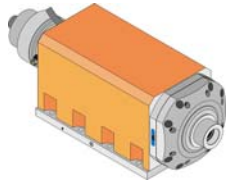
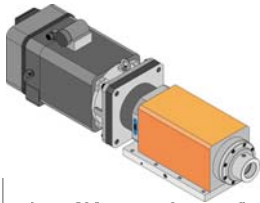
ARLA[®] Machine Products

Product Information



ARLA[®] Slide Unit

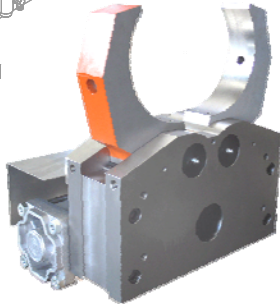
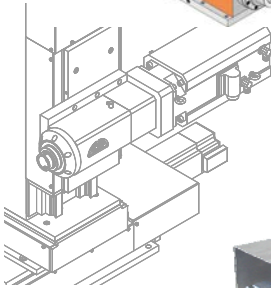
- slide & table units with digital direct **servo drives** for short or long travels; typical applications: automotive, marine, aviation (x / x-y unit)



ARLA[®] Spindle Unit

powerful drilling-boring-milling-turning-facing unit

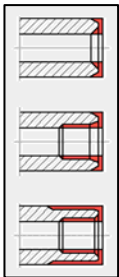
- spindle unit with a concentricity less than $< 2\mu\text{m}$; hybrid spindle bearings; drives with air or water cooling; air sealing; **servo drives**; combinations with ARLA slides as complete CNC machining units; HSK 50-100; models available as **motor spindle** units (also with facing heads)



ARLA[®] Workholding System

concentric workholding of shafts, pipes & tubes

- **ARLA Clamping Systems** with changeable jaw sets in order to support various diameters starting with 5 mm up to a maximum of 410 mm workpiece diameter (OD) depending on the model; pipe size: 1/2" – 16"



ARLA[®] Endworking Machine + Units

modular CNC endworking machine or station

- combined slide & spindle unit with workpiece length adjustment (for single or double sided machining)
- typical applications for endworking of tubes, pipes, shafts, bars, rods, etc.

